

PROFESSIONAL MEDICAL OFFICE



Keslinger Medical Center

Build to Suit Medical/Professional Office Space

2800 Keslinger Road, Geneva

3,318 & 4,897 SF Available

473 Dunham Road, Suite 200
St. Charles, Illinois 60174

www.murraycommercial.com

Sharon O'Leary
630-688-7483
Sharon@murraycommercial.com



YOUR VISION. OUR DEDICATION. YOUR PARTNER.

Property Specifications Keslinger Medical Campus—2800 Keslinger Road



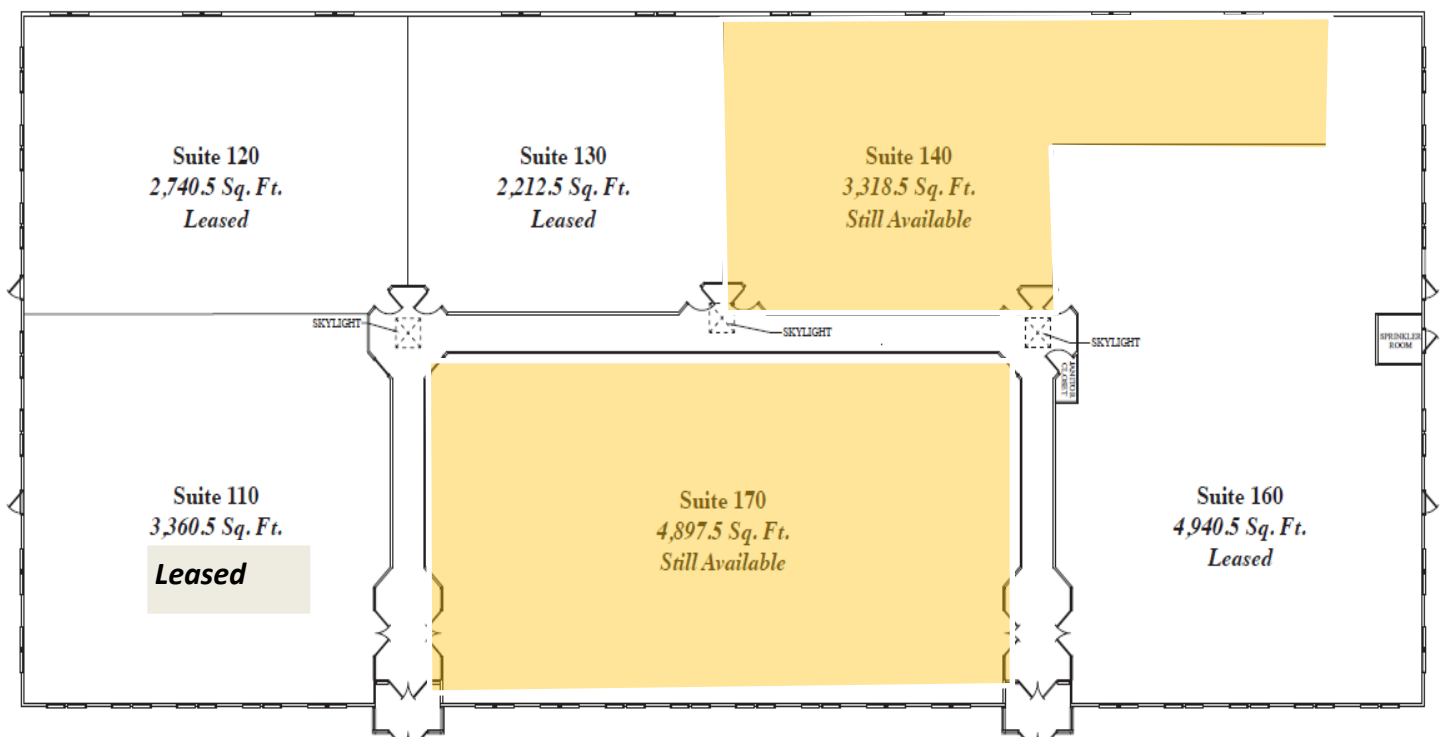
<u>Units for Lease</u>	<u>SF</u>	<u>Asking Rent</u>
Suite 170	4,897	\$ 22 NNN
Suite 140	3,318	\$ 22 NNN
Deliverable Space:	Shell Condition TI Allowance \$75 per SF	
Building SF	21,470	
Ownership	M-C Commercial Properties, Inc.	
Tax PIN	12-12-200-023	
Year Built	2016	
Lot Size	50,965 SF	
# Units	6	
Zoning	PUD Medical Office Campus	
Municipality	Geneva	
County	Kane	
Township	Geneva	
Real Estate Taxes	\$ 9,950.90 \$1.16/SF (2016 payable 2017)	

Floor Plan

Keslinger Medical Campus—2800 Keslinger Road

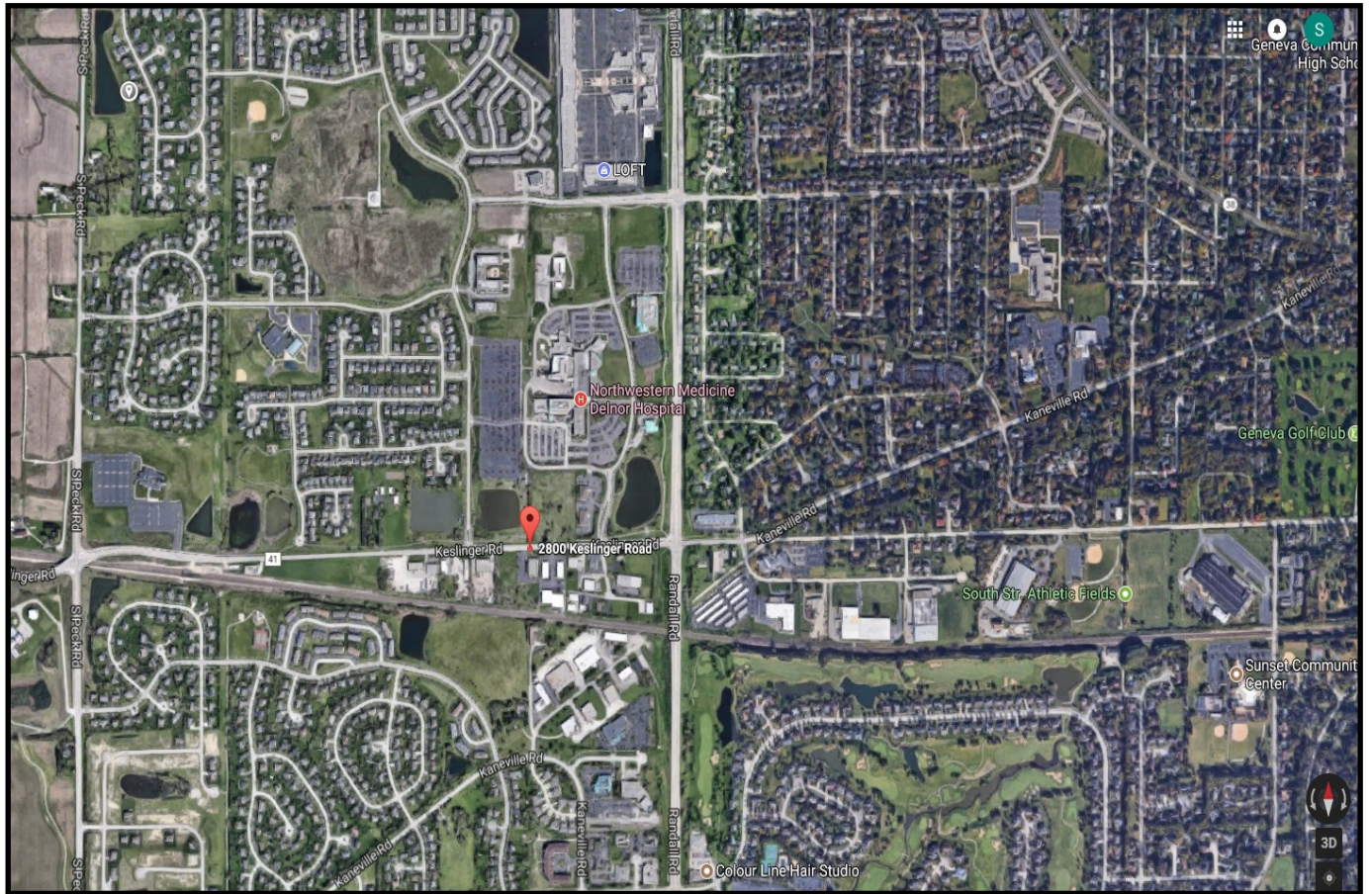
KESLINGER MEDICAL CAMPUS

2800 Keslinger Road - Geneva, Illinois



Location

Keslinger Medical Campus—2800 Keslinger Road



Excellent location just South of the Northwestern Medicine Delnor Hospital and Randall Road Corridor.

Close to restaurants, shopping and retail.

PHOTOS

Kesling Medical Campus—2800 Kesling Road



PHOTOS

Kesling Medical Campus—2800 Kesling Road



For More information

Contact:

Sharon O'Leary
Murray Commercial

473 Dunham Road
Suite 200
St. Charles, IL 60174

Phone: 630-513-0173

Cell: 630-688-7483

www.murraycommercial.com



YOUR VISION. OUR DEDICATION. YOUR PARTNER.